

Q728

Qseven Carrier Board



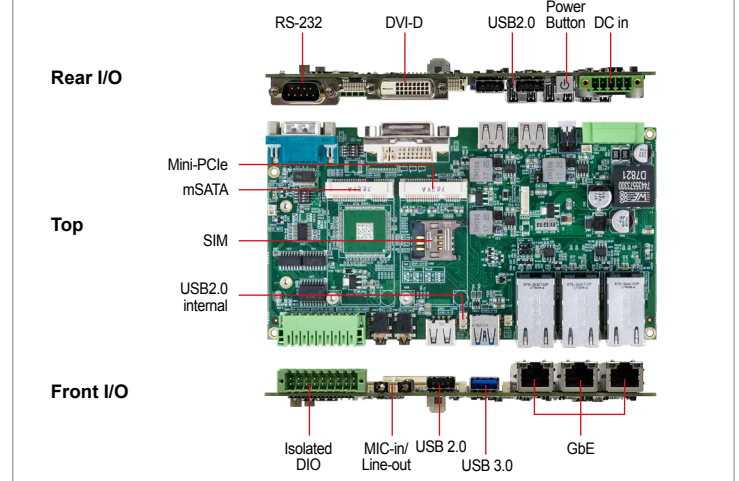
Features

- Qseven Rev. 2.0 compliant
- Compact size: 175 x 95 mm
- Wide-Range DC voltage input: 9V~32V
- Dual display: 1x DVI-D
- 3x RJ45 GbE Ethernet with 802.3at PoE PSE
- 1x Mini-PCIe with USIM socket, 1x mSATA socket
- 1x USB 3.0/2.0, 3x USB 2.0, 1x USB 2.0 internal
- Isolated 8-bit DI & 8-bit
- 1x RS-232

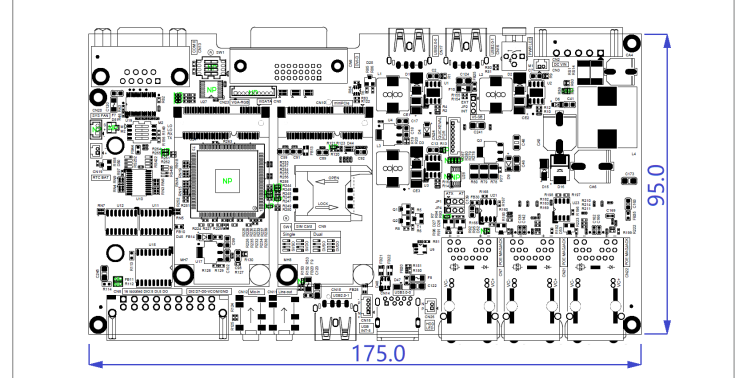
Specifications

CPU Module	
Qseven	Qseven Rev. 2.0 compliant
CPU	x86 CPU
Display	
DVI	1x DVI-D
Storage	
SATA	1x mSATA socket
USIM	1x USIM socket
I/O Interface	
Ethernet	3x RJ45 GbE with 802.3at PoE PSE (Q728-3RP) 3x RJ45 GbE (Q728-3R)
USB	1x USB 3.0, 3x USB 2.0, 1x USB 2.0 internal
Audio	1x Line-out, 1x MIC-in
UART (Serial Port)	1x RS-232
Digital I/O	Isolated 8-bit DI & 8-bit DO
Expansion	
Mini-PCIe	1x Full-Length Mini-PCIe socket (PCIe + USB + USIM)
Other	
Watchdog	Multistage
Smart Battery Management	ACPI 5.0 compliant
Power	
DC Input Voltage	9V~32Vdc
Operating System	
Windows/Linux	Depends on Q7 CPU module
Mechanical	
Dimensions	175 x 95 mm
Environment	
Operation Temperature	-20°C ~ 70°C
Storage Temperature	-45°C ~ 85°C
Operation Humidity	10% to 90%, non-condensing
Storage Humidity	5% to 95%, non-condensing
Certification	
Safety Certifications	CE/FCC Class A

I/O Interfaces



Dimensions



I/O Comparison Chart

Model Name	HDMI	GbE (RJ45)	GbE / PoE (RJ45)	DIO	USB 3.0	USB 2.0	RS-232	Mini-PCIe	mSATA
Q728-3RP	1	3	3	8-bit isolated DI & 8-bit isolated DO	1	4	1	1	1
Q728-3R									

Ordering Information

Model Name		Article Number (A/N)
Q728-3RP	Qseven Carrier Board, 1x DVI-D, 3x RJ45 GbE/PoE, 1x USB 3.0, 4x USB 2.0, 1x RS-232, Isolated 8-bit DI& 8-bit DO	7111-728100
Q728-3R	Qseven Carrier Board, 1x DVI-D, 3x RJ45 GbE, 1x USB 3.0, 4x USB 2.0, 1x RS-232, Isolated 8-bit DI& 8-bit DO	7111-728110